

## GRO CONCRETE PAVERS

GRO Concrete Pavers, designed for durability and stability, are an attractive and functional hardscaping option for creating gathering spaces or adding walking paths to patios, terraces, and rooftop areas. When installed with GRO Pedestals, these pavers offer a practical way to hide and protect roof penetrations, pipes, and uneven surfaces. GRO Concrete Pavers are available in a variety of aesthetic colors, textures, and sizes, and are A MADE IN THE USA product.



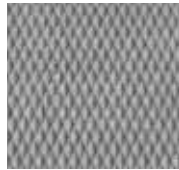
<b>MATERIAL</b>	Portland Cement (ASTM C150)
<b>DIMENSIONS</b>	24" x 24" x 2" (actual) 24" x 36" x 2" (actual) *by special order 18" x 36" x 2" (actual) *by special order
<b>WEIGHT</b>	24" x 24" x 2" = 98 lbs. 24" x 36" x 2" = 147 lbs. 18" x 36" x 2" = 110 lbs.
<b>COLORS &amp; FINISHES</b>	Diamond or Matte Finish in Natural Gray Only Shotblast (Tudor Equiv.) in Colors Shown Below Pigment conforming to ASTM C979
<b>WATER ABSORPTION</b>	≤ 0.5% (ASTM C140)
<b>COMPRESSION STRENGTH</b>	Average of 55 MPa (8500 psi); with no individual unit < 50 MPa
<b>FLEXURAL STRENGTH</b>	870 PSI (NCMA testing procedures min. req. strength 650 psi)
<b>FREEZE-THAW DURABILITY</b>	< 1% weight loss (ASTM C262)

## COLORS & FINISHES

### NATURAL GRAY - Matte, Diamond, & Shotblast Finish



PA -17



PA -17D



PA -17M

### STANDARD COLORS - Shotblast Finish



PA -14



PA -16



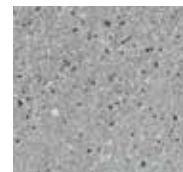
PA -18



PA -110



PA -113



PA -123



PA -127



PA -131



PA -132



PA -150



PA -158



PA -160



PA -161



PA -162



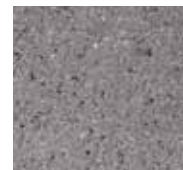
PA -163



PA -166



PA -168



PA -179

### PREMIUM COLORS - Shotblast Finish



PA -11



PA -12



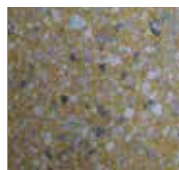
PA -129



PA -145



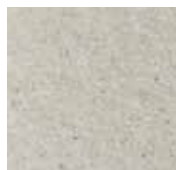
PA -153



PA -165



PA -171



PA -175



PA -178



PA -189

\* Pavers listed in bold are available in the GRO Sample Box; other paver sample colors are available upon request