



New Zealand Council Of
Christian Social Services

Together We Can... Strategic Directions

NZCCSS Conference 2010

President's Opening address

Shaun Robinson



New Zealand Council Of
Christian Social Services

Global Trends – Local Realities

- Global boom - global recession
- Ageing Population
- Health workforce migration
- Climate change
- Technological change
- Consumer demand



New Zealand Council Of
Christian Social Services

NZCCSS - a unique role

“ a depth of compassion and aroha is needed in our society” (Dementia Future Directions for Service)

“Together we can” meet those needs – when we understand, collaborate and communicate to best use all our available resources.



New Zealand Council Of
Christian Social Services

Working Together at NZCCSS



The Anglican Care Network

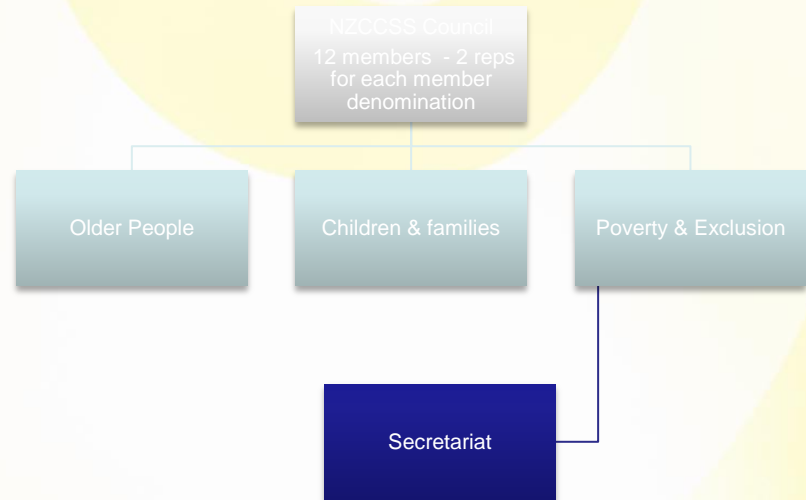
of agencies, parishes and diocesan social services in New Zealand



The Catholic Church in New Zealand
Te Hahi Katorika Ki Aotearoa



Te Ope Whakāora





New Zealand Council Of
Christian Social Services

Together in action...

- Approx 1,445 social service programmes
- 424 sites
- 1,000,000 interventions per year
- Around two-thirds directed towards older people
- 12,500 staff
- 6,500 FTE
- 9,000 volunteers
- \$300 million turnover
- \$180 million government funded
- Older people are providing services as well as receiving



New Zealand Council Of
Christian Social Services

Together we face challenges...

- Recession impacts - impacts across the whole community
- Ageism – We don't yet value the longevity we have achieved
- Vulnerability to Poverty of older people – growing inequality, dependence on NZ Super adequacy



New Zealand Council Of
Christian Social Services

And yet more challenges...

- Health restructuring through the “back door” – National Health Board, Integrated Family Health Centre
- Fiscal limits – DHB, MoH, MSD budgets under pressure. Satya Brink: lower level services being squeezed
- Lack of national strategy – a slogan “Better, Sooner, More Convenient” but is it a plan?



New Zealand Council Of
Christian Social Services

Together we seize the opportunities...

- Spirituality – this is central to our response
- Values – needed more than ever: For-People (Not-For-Profit)
- Parish links – Manaaki Hapori Supporting Communities project examples: Sister Loyola, Selwyn Centres, etc.



New Zealand Council Of
Christian Social Services

more opportunities

- Growing importance of informal care – supporting integrated approaches to informal & formal care & support
- Resilience of the church-based sector – resilient innovators and leaders (e.g. restorative care, day programmes, social support)
- NZCCSS occupies a distinct place – service providers and also advocates for justice and compassion. An integrated vision for real quality in services.



New Zealand Council Of
Christian Social Services

Vision – true sustainability

- Co-operation, a shared vision and a focus on the wellbeing of the people and communities being served.
- A network of services that share a vision of Christian compassion and service. They share a motivation to be there for the most vulnerable and stay in for the long haul.

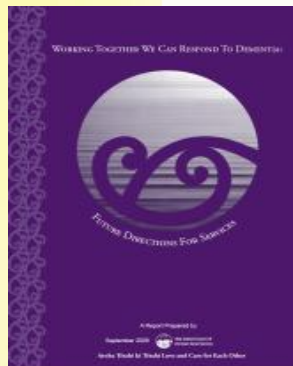


New Zealand Council Of
Christian Social Services

Key Projects



- Manaaki Hapori Supporting Communities
- SOP Conference 2010 “Together We Can...”
- Together We Can Respond to Dementia: Future Directions for Service





New Zealand Council Of
Christian Social Services

Advocacy

Together
we can ...

provide support for
those New Zealanders
most affected by the
global economic crisis



A set of messages and some
key recommendations from the
leaders of the Anglican, Baptist,
Catholic, Methodist,
Presbyterian and Salvation
Army churches and the
New Zealand Council of
Christian Social Services

March 2009

VULNERABILITY REPORT Issue 1 June 2009

INTRODUCTION

The extent of the NZ Council of Christian Social Services' concern is such for a post and post-crisis society.

The Council is concerned to bring attention to the most vulnerable members of our society. In the past year and a half, the Council has been working to identify and support those most vulnerable to the global economic crisis. This report is a summary of the Council's findings and recommendations. It is intended to provide a high level overview of the current situation and to highlight areas where action is needed.

The Council is concerned to bring attention to the most vulnerable members of our society. In the past year and a half, the Council has been working to identify and support those most vulnerable to the global economic crisis. This report is a summary of the Council's findings and recommendations. It is intended to provide a high level overview of the current situation and to highlight areas where action is needed.

TRENDS IN THE COST OF LIVING

Expenditure on the most vulnerable has increased significantly since the start of the global economic crisis. This is due to a number of factors, including:

1. The increase in the cost of living, particularly in housing and transport.
2. The loss of income for many people, particularly those in low-paying jobs.
3. The increase in the number of people who are unemployed.

HOMELESSNESS & HOUSING TRENDS

Homelessness has increased significantly since the start of the global economic crisis. This is due to a number of factors, including:

1. The increase in the cost of living, particularly in housing.
2. The loss of income for many people, particularly those in low-paying jobs.
3. The increase in the number of people who are unemployed.

- Church Leaders meetings with PM & DPM
- Vulnerability Reports quarterly since March 2009
- Briefing to the Incoming Government



Briefing to the Incoming Government
Working together with the most vulnerable to grow robust communities

New Zealand Council of Christian Social Services

The unprecedented events of the international financial meltdown have the prospect of social meltdown that parallels the financial crisis. Both globally and in the country it is those who have the least wealth who are most immediately vulnerable to the consequences of an economic downturn. Now more than ever it is vitally important to our social, economic and political decision making to recognize that we must look after one another. Jesus encourage Anne writes to invite to "love your neighbour as yourself" is a message to those in political leadership as much as it is to those in everyday life.

NZCCSS calls on the incoming government to join with social service organisations to support and protect the most vulnerable amongst us - our children, our older people, those who are homeless and those in poverty. It is the duty of government to work with communities to give a stronger future for us all. The modern and long term social costs of not supporting the most vulnerable will far exceed any short term fiscal cost of acting now to look after each other.

Who we are

Every day of every week, the members of the New Zealand Council of Christian Social Services (NZCCSS) - the Anglican Care Network, Baptist Churches of New Zealand, Catholic Social Services, Presbyterian Support Services Inc and the Methodist and Salvation Army churches - provide essential services through collectively serving and working in communities throughout Aotearoa New Zealand.

Let Us Look After Each Other

Amara struam in struam





New Zealand Council Of
Christian Social Services

Communications



- Policy Watch E-news fortnightly
- Kete Kupu newsletter every two months
- Website – about to be re-launched
- Member survey 2009
- Member feedback: policy groups, Council reps, website, site visits
- 1800 church parishes





New Zealand Council Of
Christian Social Services

Submissions & Comment

- Submissions: Infrastructure Bill (housing), RTA and ACC
- Comment on discussion documents:
 - ARC Services Steering Group
 - Whanau Ora
 - National Dementia Service Specifications
 - Careerforce Governance Review
 - Review of HDC Legislation
 - Review of RN Scope of Practice
 - Review of Holidays Act
 - Alzheimers NZ National Dementia Strategy



New Zealand Council Of
Christian Social Services

Services for Older People Policy Group

- Judy Hindrup (Convenor), Assisi Atawhai Home and Hospital, Hamilton
- Gillian Bremner, Presbyterian Support Otago, Dunedin
- Val Sugrue, Howick Baptist Healthcare, Auckland
- John Baird, Alexander Consulting, Auckland
- Shirley Hennessey, Home of St Barnabas, Dunedin
- Meng Cheong Salvation Army HomeCare, Hamilton
- Louis Fick Tamahere Eventide, Hamilton
- Rod Perkins, Selwyn Foundation, Auckland