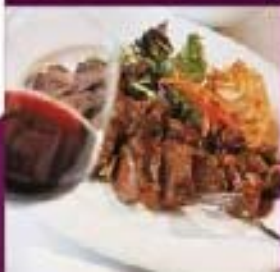




BRIGHT*water*



**NZ Council of Christian Social Services  
Aged Care Conference, Dunedin**

**Thursday, 20<sup>th</sup> April 2006**

**Changing Landscape of Services for Older People  
"Coming Ready or Not!"**

**Dr Penny Flett  
CEO, Brightwater Care Group**







Home of Peace..  
♦ 1903 ♦



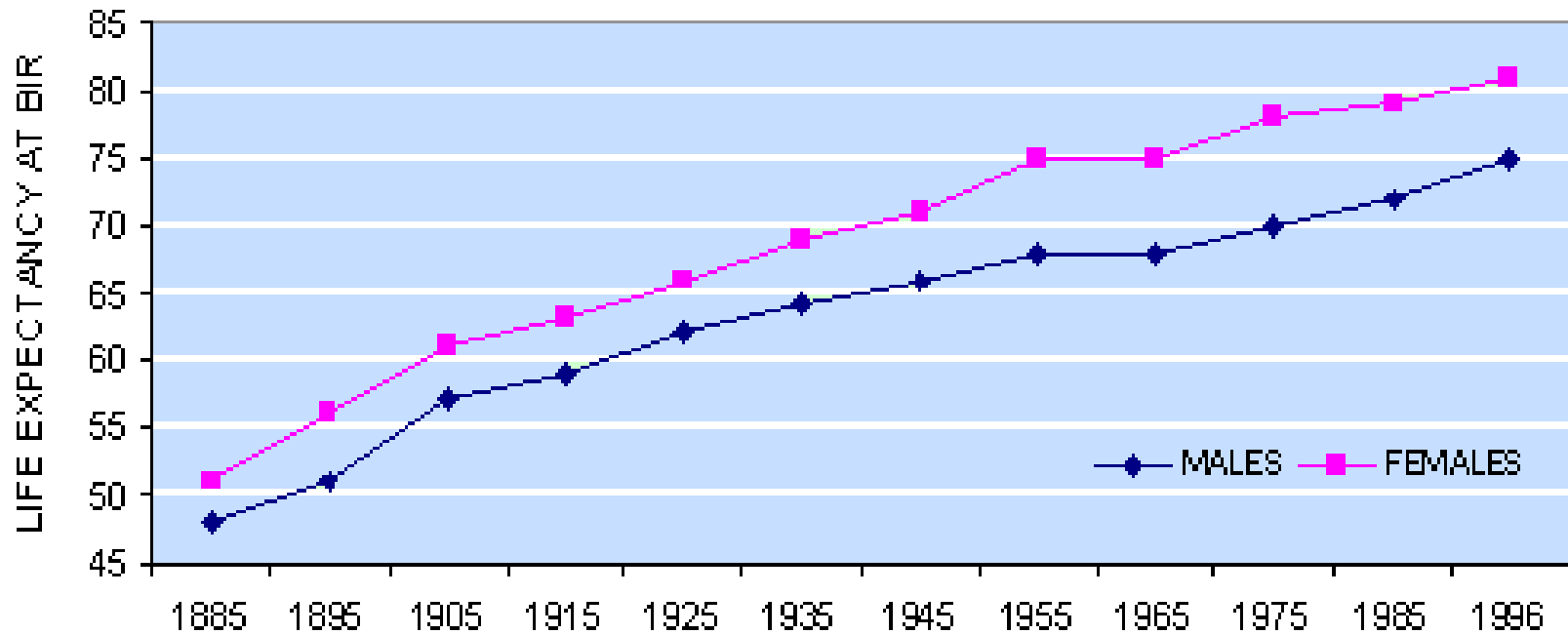
— Lady Smith's (Men's) Ward. —







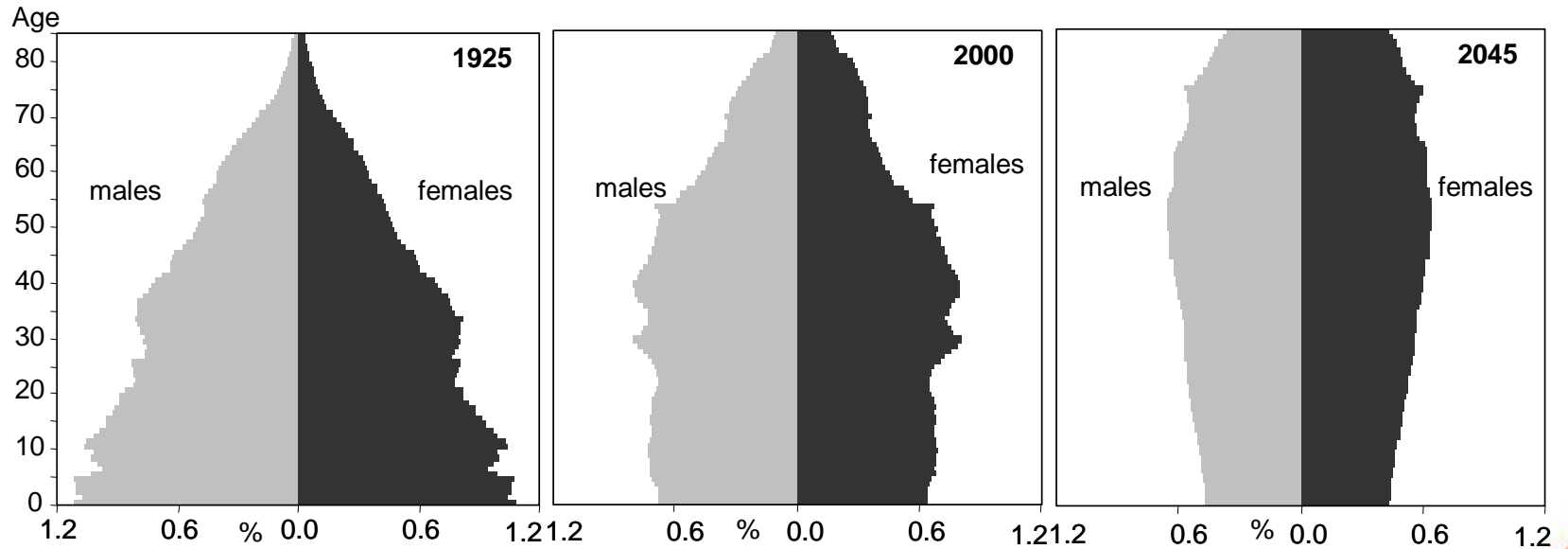
# Life Expectancy





# Baby Boomers

from Pyramid to Coffin -  
changing age structure of the Australian population,  
1925-2045



# Old People tomorrow will be different:

- **technology revolution**
- **consumerism**
- **high expectations**
- **political and economic power**

# Value of Carers



**We cannot afford  
more of the same**

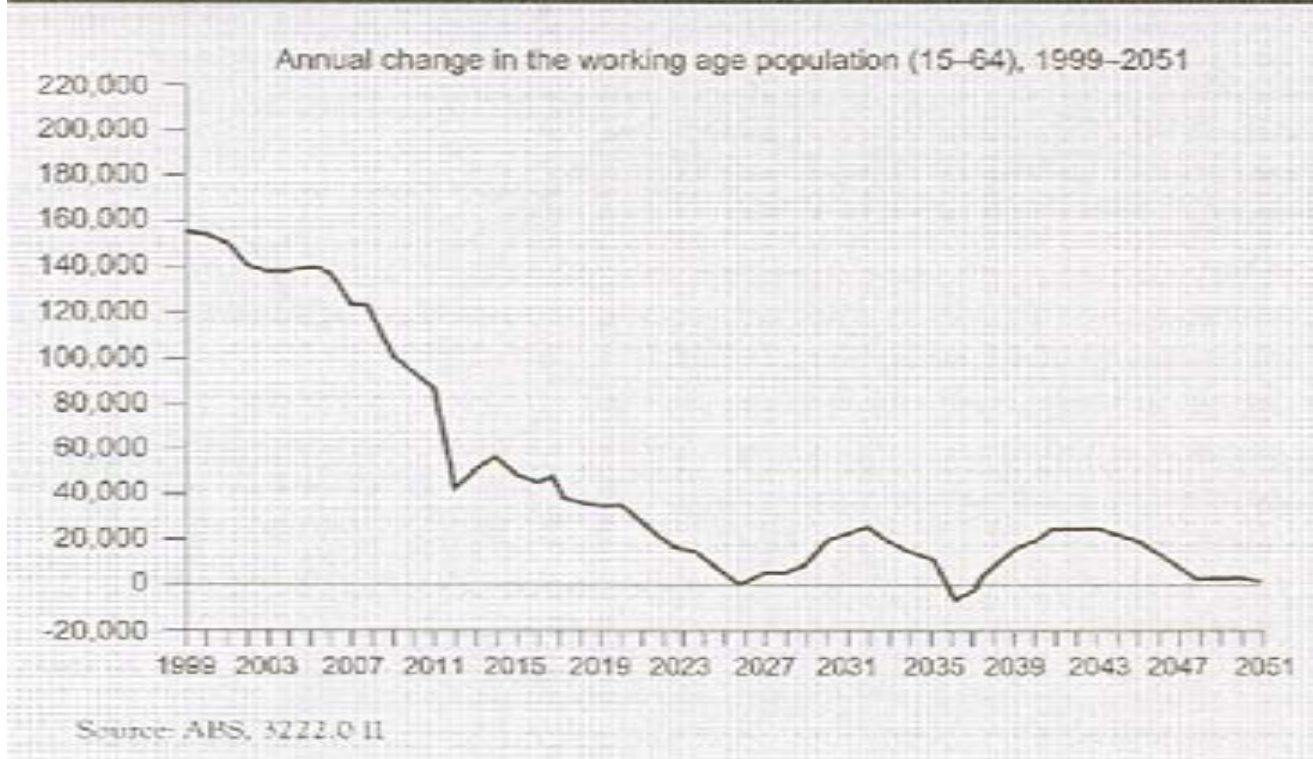
**We do not want  
more of the same**

# **Workforce – a very serious challenge**



# Workforce Shrinkage

Figure 11. Working age population growth – the future challenge



**“Employer of Choice”**

**– a new phenomenon**

# The Maelstrom of Change



# Tomorrow's challenges –

- **social challenges**
- **health challenges**
- **aged care challenges**

# Satya Brink

- 3 phases

- **Phase 1: elderly 10% of population**
- **Phase 2: elderly 14% of population**
- **Phase 3: elderly >15% of population**

# So what will we do?

- **sustainability**
- **read the tea leaves**
- **transform**





